

# Waste Coal – Mine Land Reclamation

**Before** and **After**  
Reclamation

Inter-Power/AhlCon  
Partners, LP  
Colver Power Project  
Reclamation





## COLVER REFUSE SITE

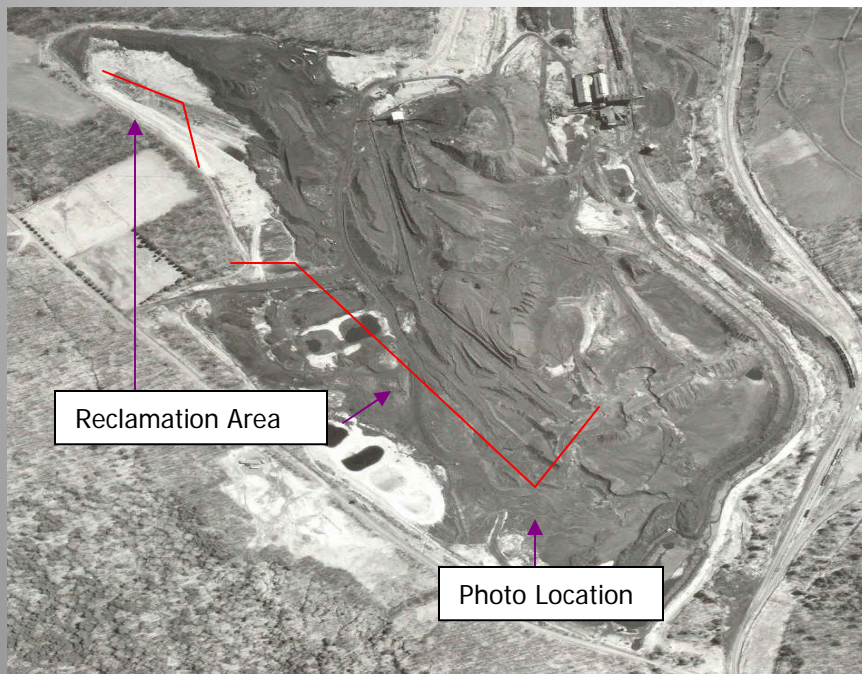
Barr and Blacklick Townships, Cambria County

Permit #11900201 – Maple Coal Company

Receiving Stream: Elk Creek to North Branch of Blacklick Creek to Blacklick Creek to  
Conemaugh River to Kiskiminetas River to  
Allegheny River to Ohio River

27.8 Acres reclaimed 2,091,092 clean tons removed thru 2/28/07

APRIL 10, 1987



DURING RECLAMATION





**Aerial of Maple Coal  
Colver Refuse Site**





**Reclaimed Portion of the Maple  
Coal - Colver Refuse Site**



# Reclamation Sites By Mining Industry

- Ridge Energy – Bakerton Site
- Dunamis Resources Inc – South Fork Site
- Amerikohl Mining Inc – Ernest Site
- Robindale Energy – Barnes-Watkins Site



**BAKERTON SITE**  
**West Carroll Township, Cambria County**  
**Permit #11950201 – Ridge Energy Company**  
**Receiving Stream: West Branch of Susquehanna River to Susquehanna River to Chesapeake Bay**  
**14.2 Acres    130,856 tons removed (1996 – 1998)**

**BEFORE RECLAMATION**



**AFTER RECLAMATION**



## **SOUTH FORK SITE**

Adams Township and South Fork Borough, Cambria County

Permit #11960102 – Dunamis Resources, Inc.

Receiving Stream: Unnamed Tributary to South Fork of the Little Conemaugh  
River to Conemaugh River to Kiskiminetas River to Allegheny River to Ohio  
River

12 Acres    32,924 tons removed

**BEFORE RECLAMATION**



**AFTER RECLAMATION**





## **ST. MICHAEL SITE**

Adams Township, Cambria County

Permit #11940201 – Senate Coal Mines, Inc.

Receiving Stream: Unnamed Tributary to South Fork of the Conemaugh River to Little  
Conemaugh River to Conemaugh River to Kiskiminetas River to Allegheny River to  
Ohio River

26 Acres reclaimed 211,079 tons removed

### **BEFORE RECLAMATION**



### **AFTER RECLAMATION**



## **ERNEST SITE**

Rayne Township, Indiana County

Amerikohl Mining, Inc.

GFCC 32-00-04

32.2 Acres reclaimed 711,736 clean tons removed

### **BEFORE RECLAMATION**



### **AFTER RECLAMATION**





## **Robindale Energy LLC**

Barr Township, Cambria County

18 Acre Site – Containing 1,300,000 Tons of Coal Refuse

Degraded Head Waters of the West Branch of the Susquehanna River

(Acidity and metals, such as iron)

Pile was on fire for decades emitting pollutants, including  
Carbon Monoxide and Carbon Dioxide to the Atmosphere)

### **Before Reclamation**



### **After Reclamation**



**Ebensburg Power Company**





## REVLOC REFUSE SITES

Cambria Township, Cambria County

Permit Nos. 11960202 & 11880201

Ebensburg Power Company

86.3 Acres are being reclaimed

Over 3,500,000 tons removed since May of 1989

### BEFORE RECLAMATION



### AFTER RECLAMATION



NANTY GLO EAST & WEST REFUSE SITES

Cambria Township, Cambria County

Permit No. 11020202

Ebensburg Power Company

Started in November of 2005

89 Acres to be reclaimed

7,000,000 tons to be removed over the life of the Project

**East Site**



**West Site**



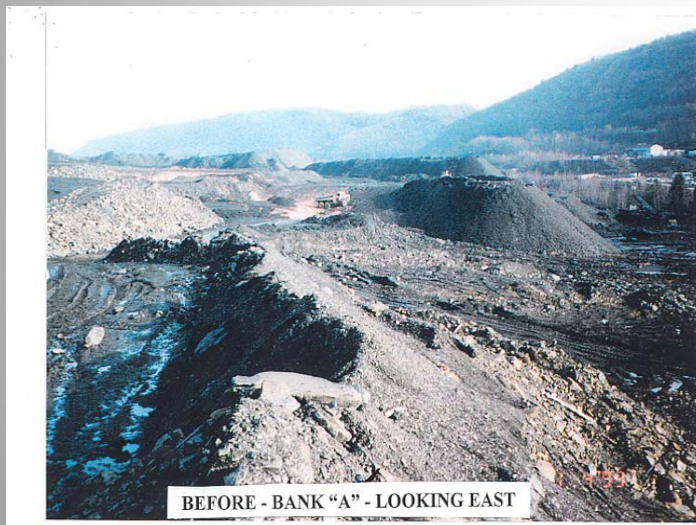


**Panther Creek Partners LP  
Panther Creek Power Plant**

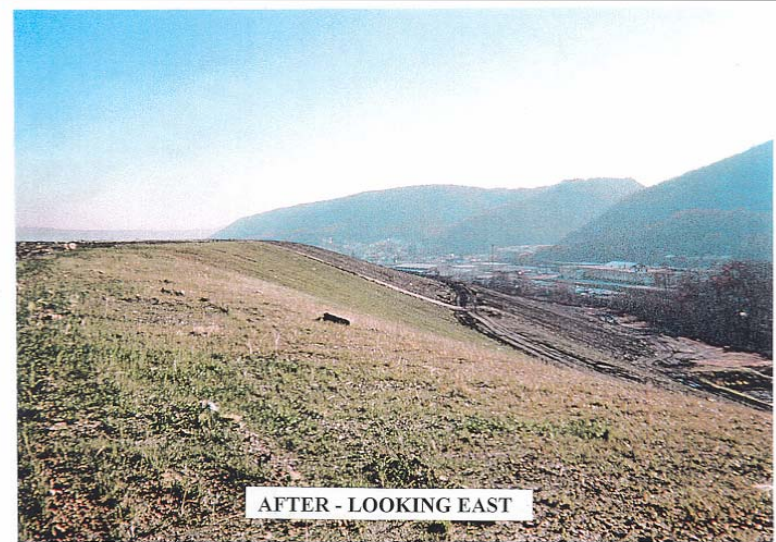


# Panther Creel Partners LP

**Before Reclamation**



**After Reclamation**



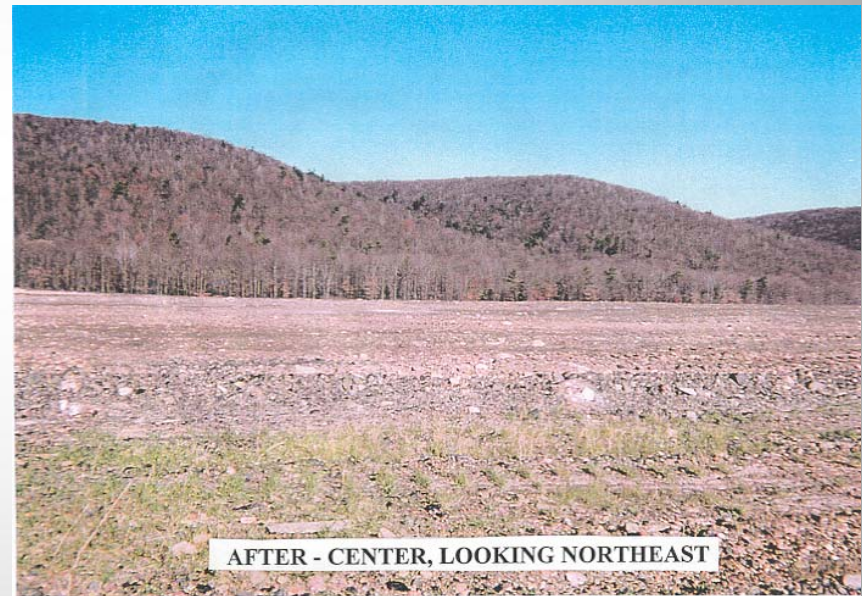


# Panther Creek

**Before Reclamation**



**After Reclamation**



## Cogentrix-Scrubgrass Power Plant





# Reclaiming Leechburg

1994/1995



# LPI - LEECHBURG PROPERTIES, INC. Reclaimed





# Water Quality Improvement

## Reclaimed Affected Areas

pH increases, LPI ranging between 4.5 to 6.5 pH, CPI increased to 5.95 pH

High concentrations of metals drops

Heavy siltation from site is stopped

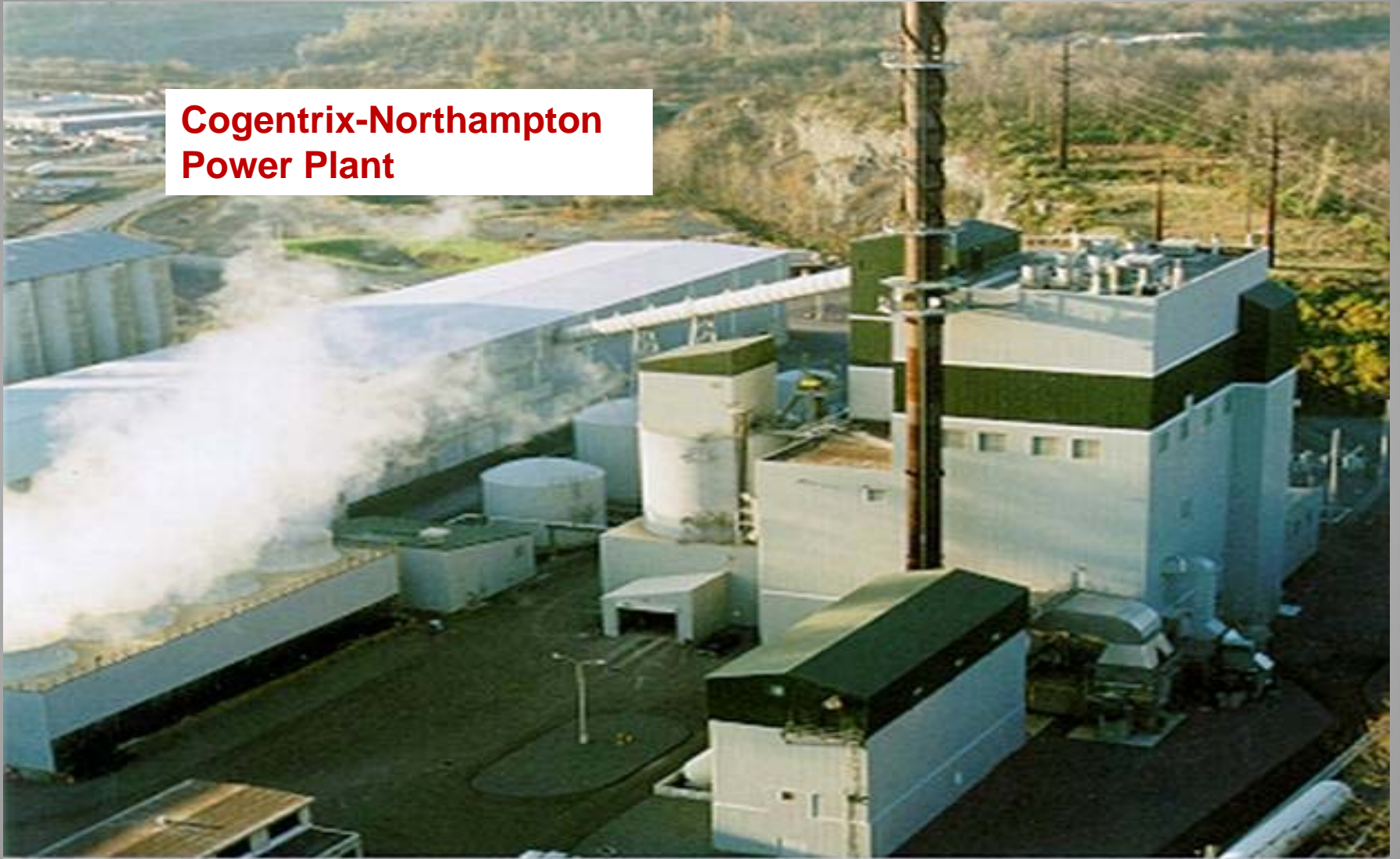


# CPI – Benjamin 6 Site





**Cogentrix-Northampton  
Power Plant**





# Mine Land Problems





# Northampton – Huber Site

**Before Reclamation**



**After Reclamation**

