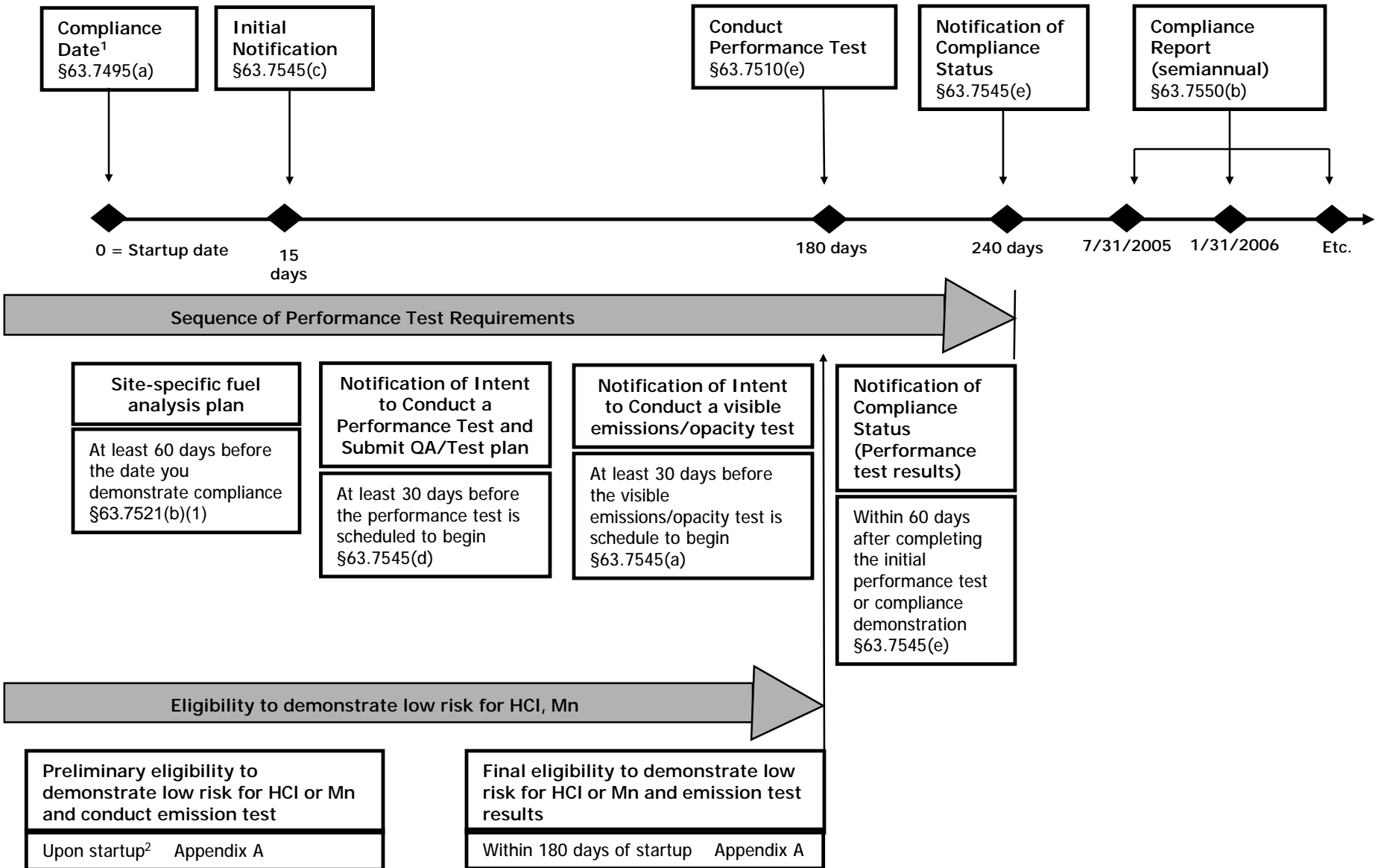


Compliance Timeline for New Sources

National Emission Standards for Industrial, Commercial, and Institutional Boilers and Process Heaters (40 CFR Part 63, Subpart DDDDD)



Footnote 1: New sources must comply by 11/12/2004 or upon startup, whichever is later §63.7495(a).

Footnote 2: New sources that start up before the effective date must comply with subpart DDDDD until they complete and submit the eligibility demonstration to permitting authority.